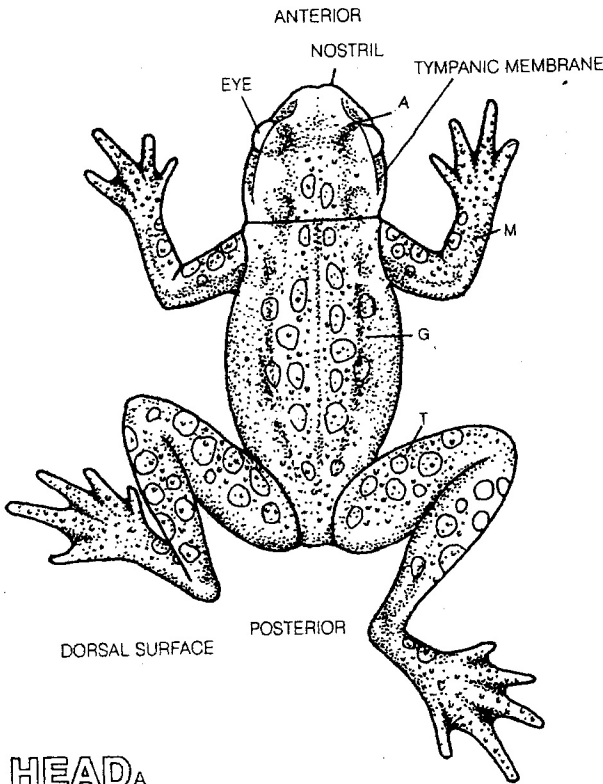


FROG: I SKELETON.

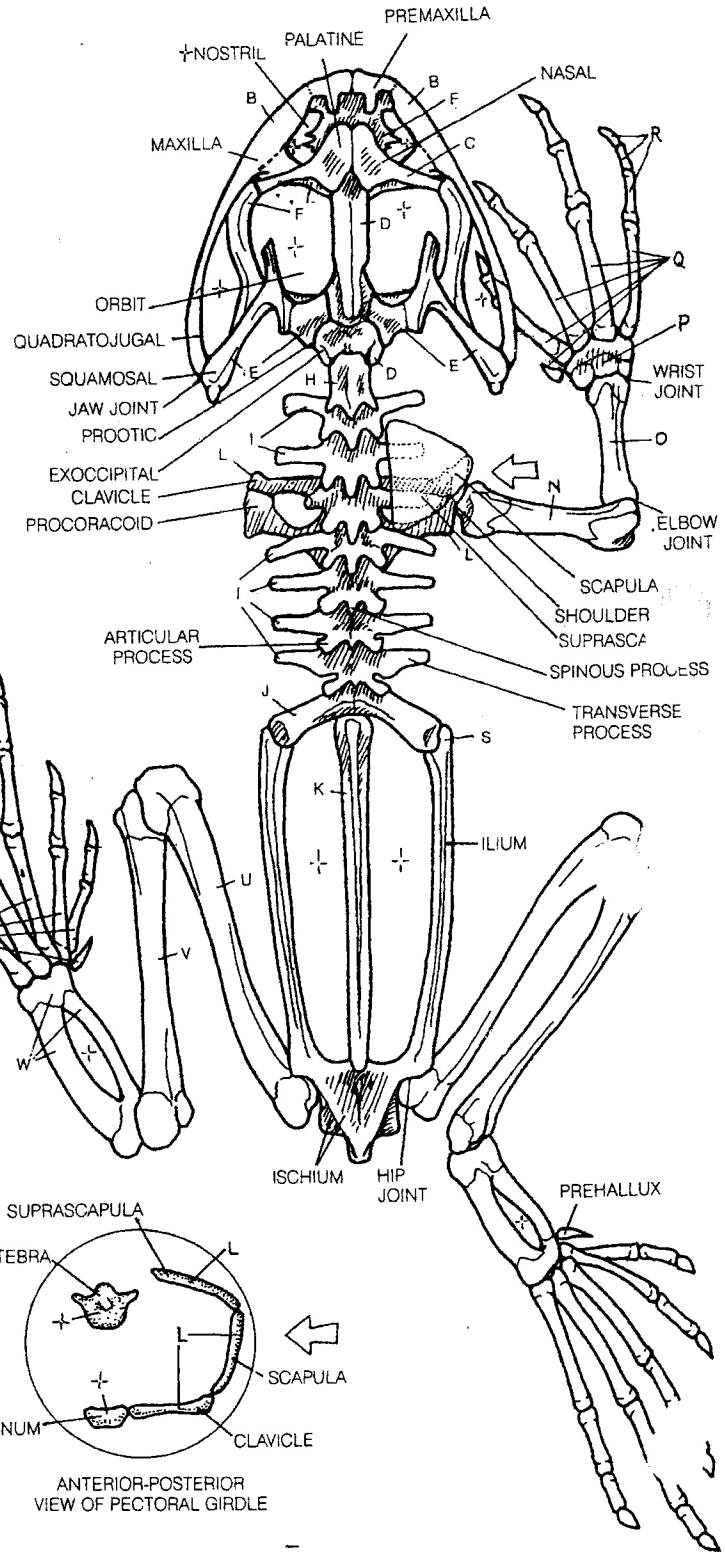


HEAD^A
 SKULL*
 UPPER JAW:
 ROOF OF
 NASAL REGION^C
 ROOF OF BRAINCASE^D
 ROOF OF OTIC CAPSULE^E
 BONES OF PALATE^F

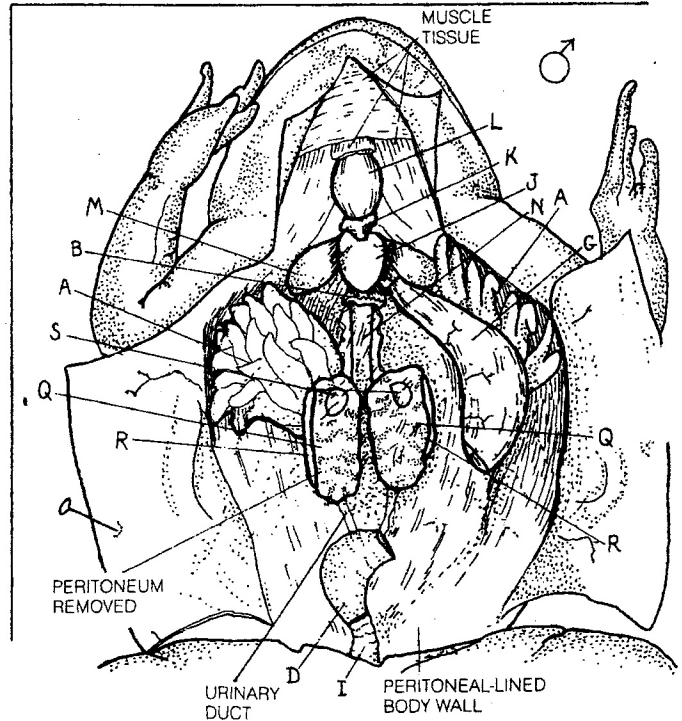
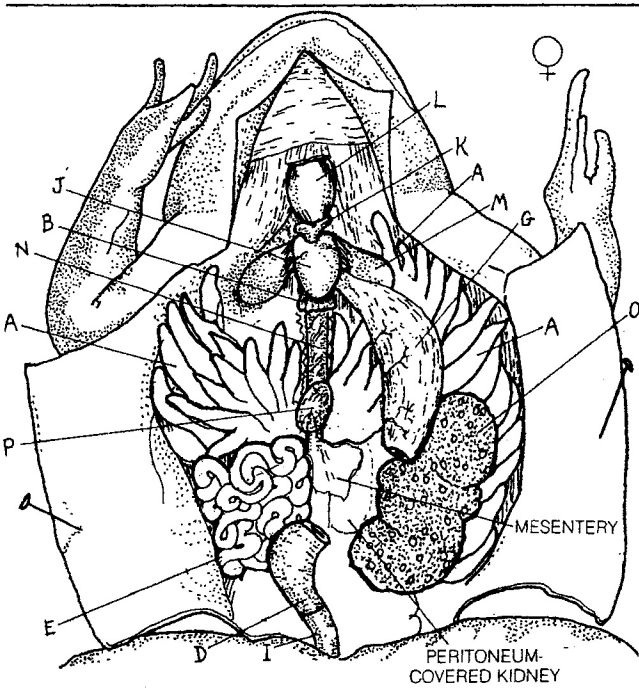
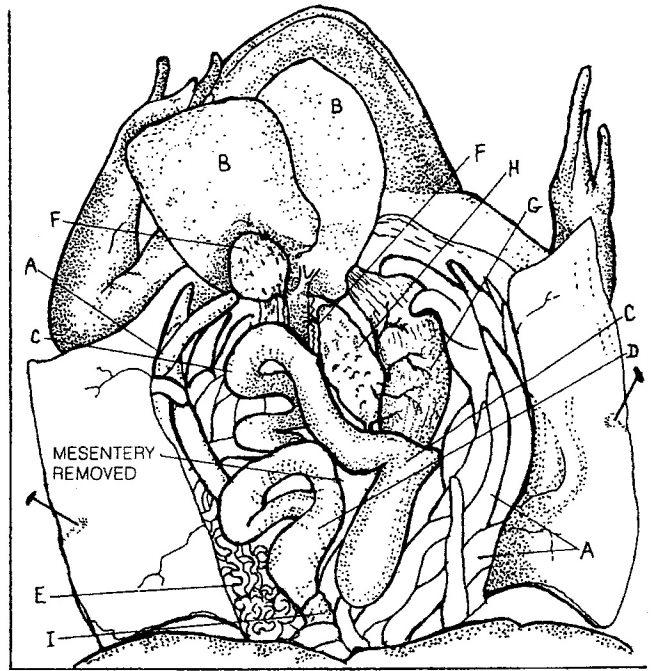
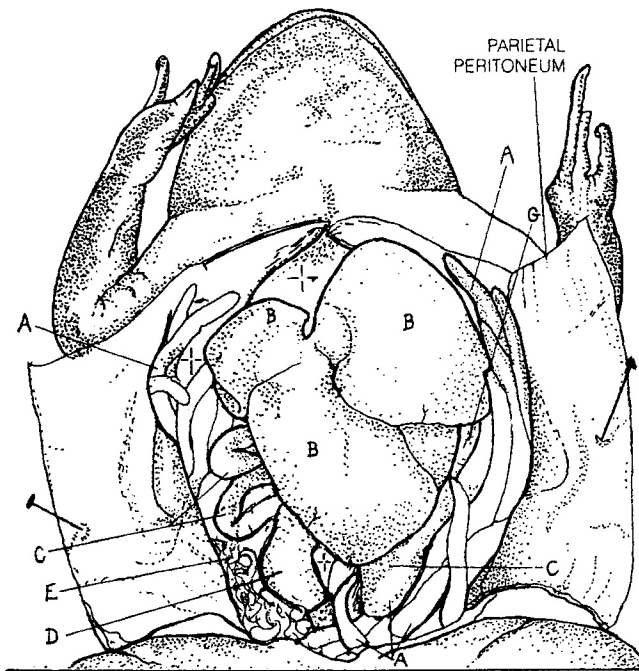
TRUNK^G
 VERTEBRAL COLUMN*
 ATLAS^H
 DORSAL VERTEBRA^I
 SACRAL VERTEBRA^J
 UROSTYLE^K

PECTORAL GIRDLE^L
 FORELIMB^M
 HUMERUS^N
 RADIOULNA^O
 CARPAL BONES^P
 METACARPAL BONES^Q
 PHALANGES^R

PELVIC GIRDLE^S
 HINDLIMB^T
 FEMUR^U
 TIBIOFIBULA^V
 TARSAL BONES^W
 METATARSAL BONES^X
 PHALANGES^{R'}



FROG: IV DISSECTION.



FAT BODY_A
 LIVER_B
 SMALL INTESTINE_C
 LARGE INTESTINE_D
 OVIDUCT_E
 GALL BLADDER_F
 STOMACH_G
 PANCREAS_H

RECTUM_I
 HEART_J
 CONUS/TRUNCUS
 ARTERIOSUS_K
 LARYNX_L
 LUNGS_M
 POSTCAVAL VEIN_N

OVARY_O
 SPLEEN_P
 KIDNEY_Q
 ADRENAL GL._R
 TESTES_S