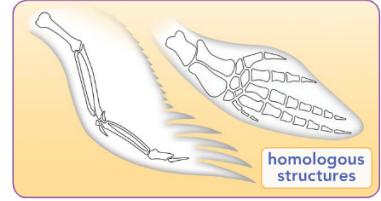


Name: \_\_\_\_\_ Date: \_\_\_\_\_ Period: \_\_\_\_\_

## Anticipation Guide: Ch 8.2 Evidence of Evolution

Pages 256-259



1. Read through the statements below **before** you read Chapter 8.
2. Check (✓) if you agree or disagree with the statement.
3. **Read** the text and find if the statement is true or false.
4. **Make any changes AND add relevant information** to the “Notes” section.

#	Agree	Disagree	Statement	True	False
1.			Since Darwin’s time, scientists have found evidence that supports the theory of evolution. <i>Notes:</i>		
2.			By examining fossil records, scientists have proven that structures of ancient organisms are similar to organisms alive today. <i>Notes:</i>		
3.			Fishes, birds and mammals all have internal skeletons with a backbone. <i>Notes:</i>		
4.			Heterologous structures, such as an organ or bone that appears in different species, are structurally similar body parts in related species. <i>Notes:</i>		
5.			Species inherit genes from their ancestors. These genes are segments of DNA that specify what type of protein/amino acids will be produced. <i>Notes:</i>		
6.			Evident from DNA and protein structure has mostly confirmed evolutionary relationships inferred from fossils, embryos, and body structures. <i>Notes:</i>		
7.			DNA comparisons have shown that dogs are more similar to coyotes than to wolves. <i>Notes:</i>		

Name: \_\_\_\_\_ Date: \_\_\_\_\_ Period: \_\_\_\_\_

## Anticipation Guide: Ch 8.3 Rate of Change

Pages 260-263



- Read through the statements below **before** you read the chapter.
- Check (✓) if you agree or disagree with the statement.
- **Read** the text and find if the statement is true or false.
- Make any **changes** AND **add relevant information** to the “Notes” section.

	Agree	Disagree	Statement	True	False
8.			On the Hawaiian islands, the male crickets have evolved from a “chirping” population into an almost silent population. <i>Notes:</i>		
9.			A new species can form when a group of individuals remain isolated from the rest of its species. <i>Notes:</i>		
10.			Fossil records have given scientists information about past life on Earth. <i>Notes:</i>		
11.			Two patterns that describe the rate of evolution are gradualism and equilibrium. <i>Notes:</i>		
12.			Gradualism is supported by fossil records and states that evolution occurs quickly and steadily. <i>Notes:</i>		
13.			Punctuated equilibrium states that evolution occurs quickly over short periods of time. <i>Notes:</i>		
14.			Fossils of intermediate life forms are more likely to be rare if the pattern of punctuated equilibrium explains how a species evolved. <i>Notes:</i>		